

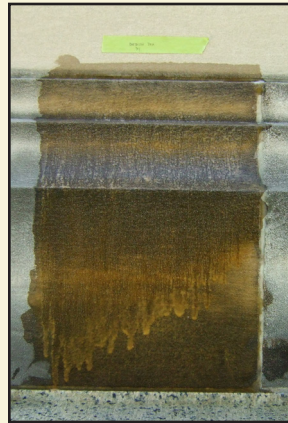
HOUSE OF THE TEMPLE

• Renovation Update for September 2010 •

DURING SEPTEMBER 2010, the Renovation Team focused on investigating how to most effectively clean the heavy soiling on the limestone exterior of the House of the Temple. The goal for the sample cleaning was to find a product which would successfully clean the stone with the least impact. The products will be evaluated to determine which best cleans the stone while minimizing the surface erosion. Four products were tested on the East end of the North facade near the corner stone. The results are described below. This sample cleaning is particularly helpful to determine the amount of effort and time required for cleaning the heavy soiling in the overall renovation project.



The image above depicts the limestone before the cleaning samples were performed. The heavy soiling extends approximately 25 inches up from the granite ledge.



Sample A: *Deitrich 707X* was diluted one part cleaner to three parts water, applied with a soft brush and allowed to remain for one hour. After a thorough rinse *Deitrich 707N*, diluted one part solution to two parts water was applied and allowed to dwell for five minutes before being thoroughly rinsed.



Sample B: The surface of the stone was pre-wet before the application of *Prosoco Light Duty Restoration Cleaner*. The solution was applied with a soft brush and allowed dwell for 10 minutes after which time a soft bristle brush was used to agitate the surface. The cleaner was allowed to remain on surface for an additional five minutes before being thoroughly rinsed.

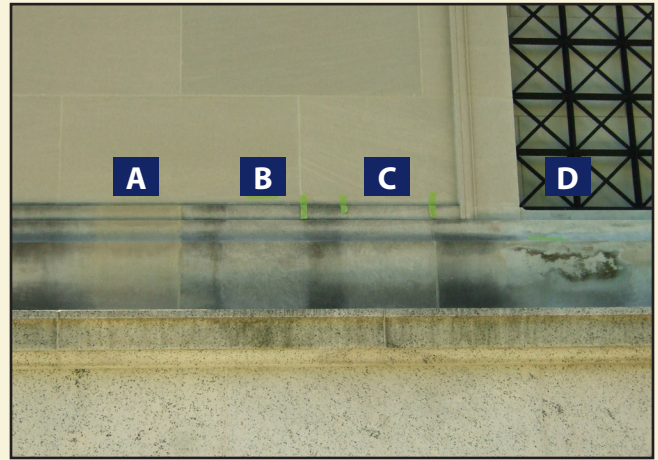


Sample C: The surface of the stone was dampened and the *masonRE B* cleaning solution by Cathedral Stone Products was applied with a soft brush. The *masonRE B* was allowed to remain on the surface for one hour before being thoroughly rinsed with water.

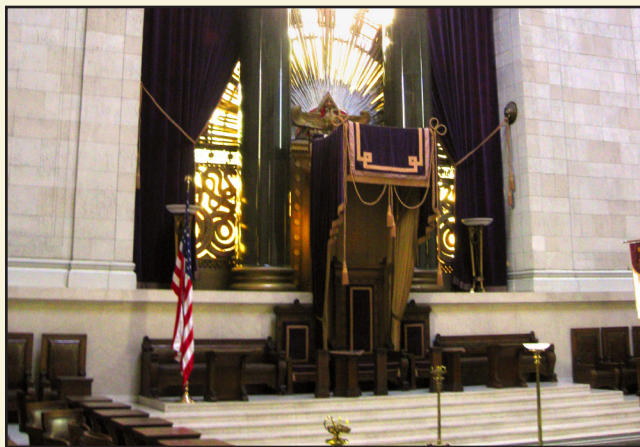




Sample D: *D/2 Biological Cleaner* by Cathedral Stone Products was sprayed onto the stone and allowed to remain for three minutes before the surface was agitated with a soft bristle brush. After a second application at five minutes, the entire sample area was thoroughly rinsed after a total dwell time of ten minutes.



Results: Of the four products tested on the limestone, the two samples which have the most satisfactory results based upon the criteria defined above are Samples A and C. Additional tests will be run with these two products to further refine the cleaning techniques.



Over the next few months, additional fire detection devices will be added throughout the House of the Temple improving life safety within the building. A video detection system will be installed within the Temple Room.



As we plan for next year, the Team will be working together to develop the initial design based upon investigations made this year with an update of the Target Cost Model to insure the project stays on budget.

